

SECTION A-A
SCALE 1 : 2

Property of the Consortium for Advanced
Radiation Sources (CARS)
This document is to be maintained in
confidence by the receiving party. It is not
to be published nor its contents otherwise
disseminated without the express written
consent of CARS, its managing agent The
University of Chicago, or ARCH
Development Corp. acting as CARS agent.

UNLESS OTHERWISE
SPECIFIED

GENERAL LINEAR	ANGULAR
.X ± .03	± .25°
.XX ± .015	
.XXX ± .005	
SURFACE FINISH	✓

DRAWN BY: MJP	DATE 2/17/2023
CHECKED BY:	DATE
DESIGNED BY:	DATE
PROJECT LEADER:	DATE
MATERIAL:	
W.B.S. No.	
ELECTRONIC FILE NAME: Mjolnir_v2.2	

DETAIL B
SCALE 3 : 2

Pressure Vessel_v2 (PEEK)

4345T15_Top Piston Ball End

Pressure Vessel Anvil_v1.5

Pressure Vessel Anvil - Bottom Through Flow

8457K21_Bottom Piston Through-Flow

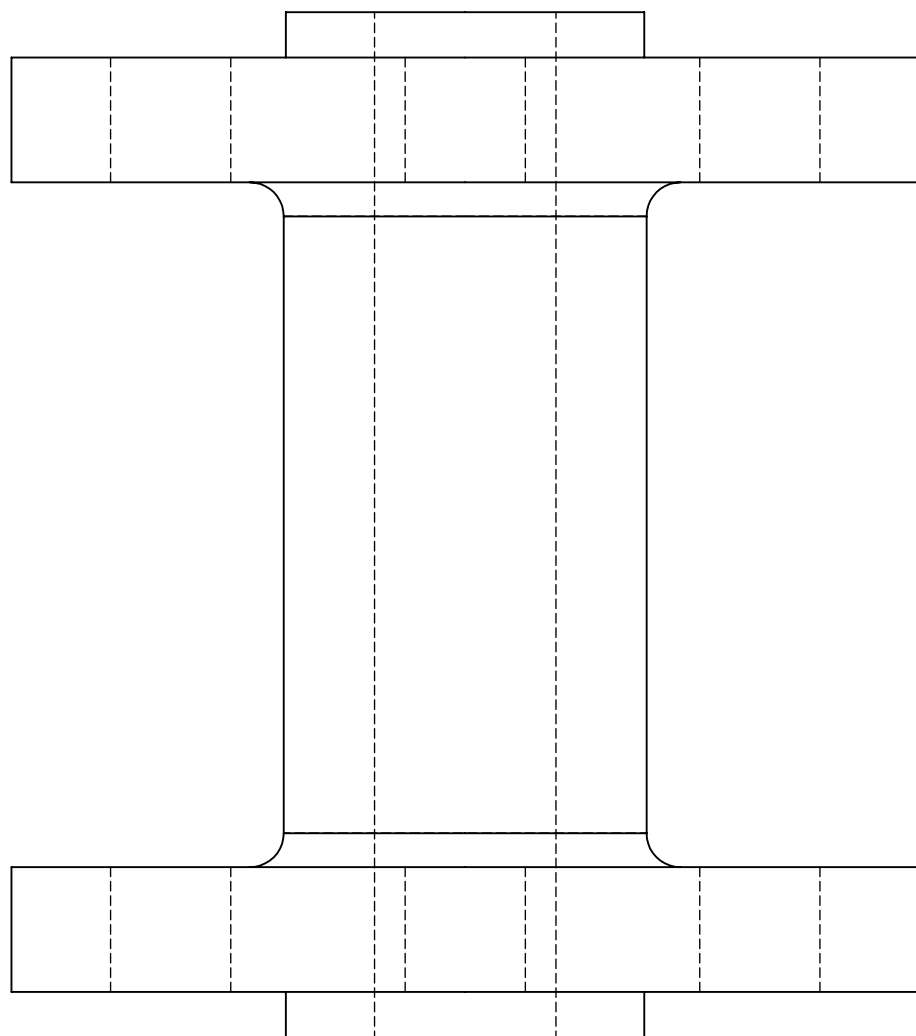
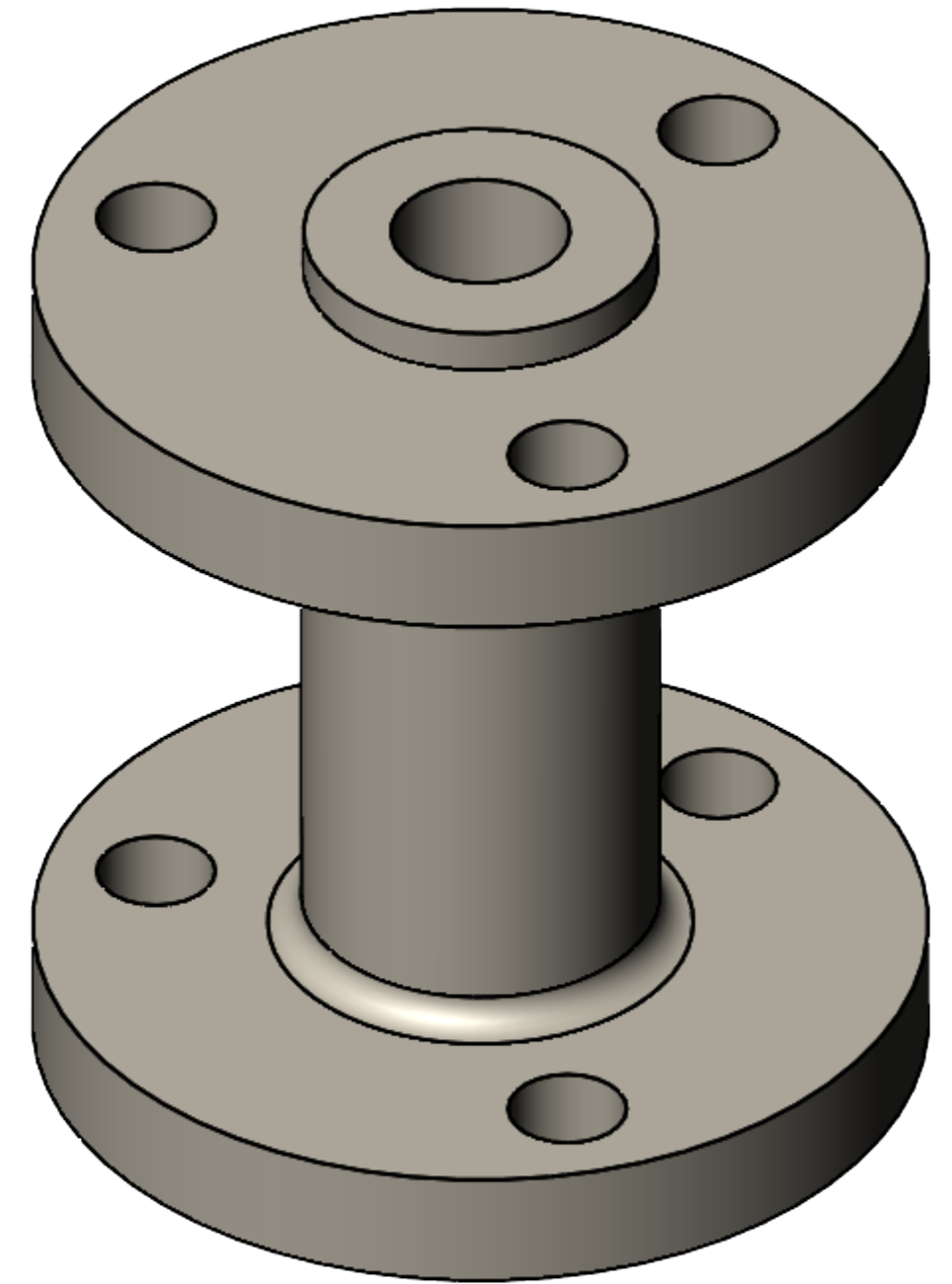
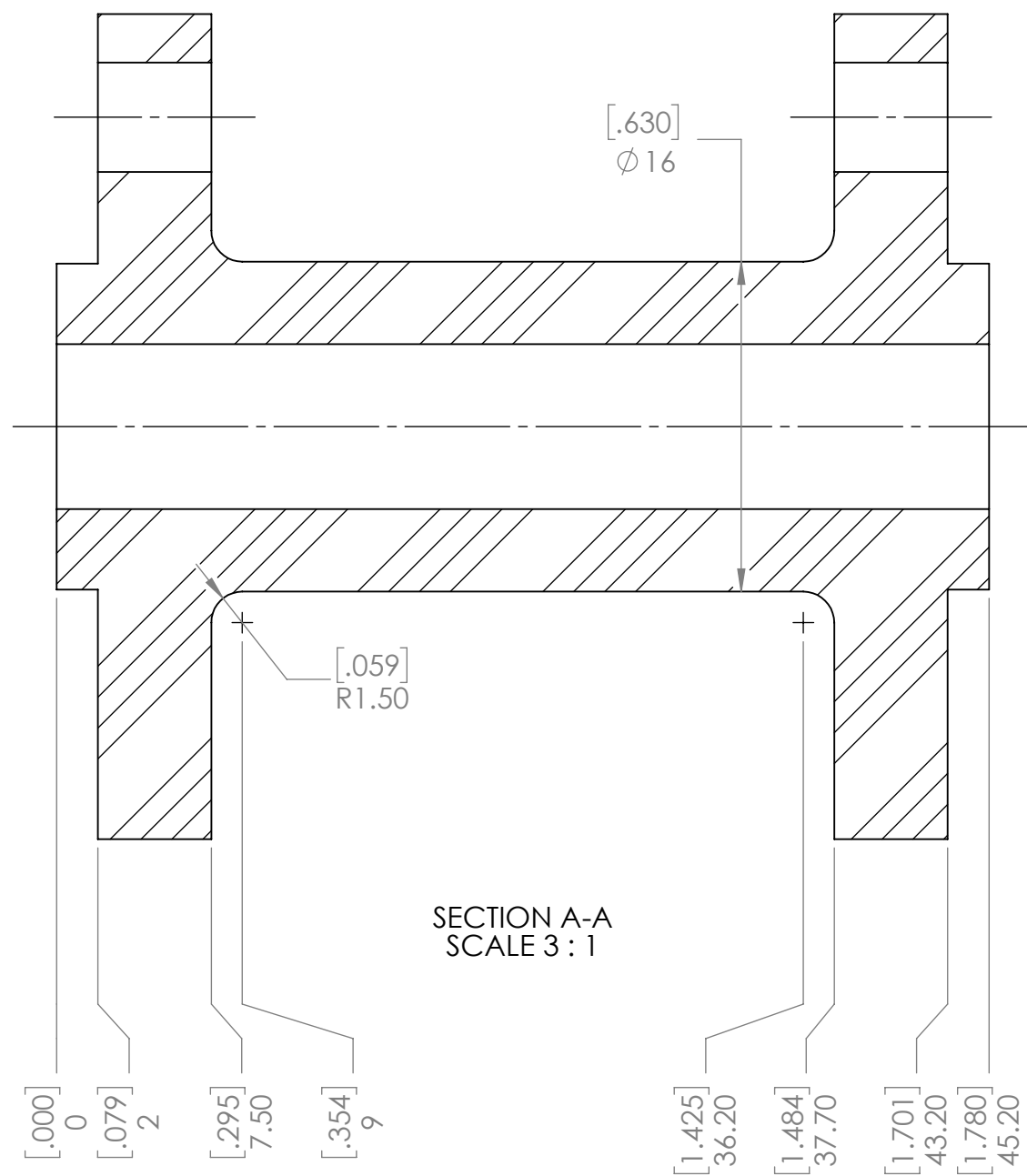
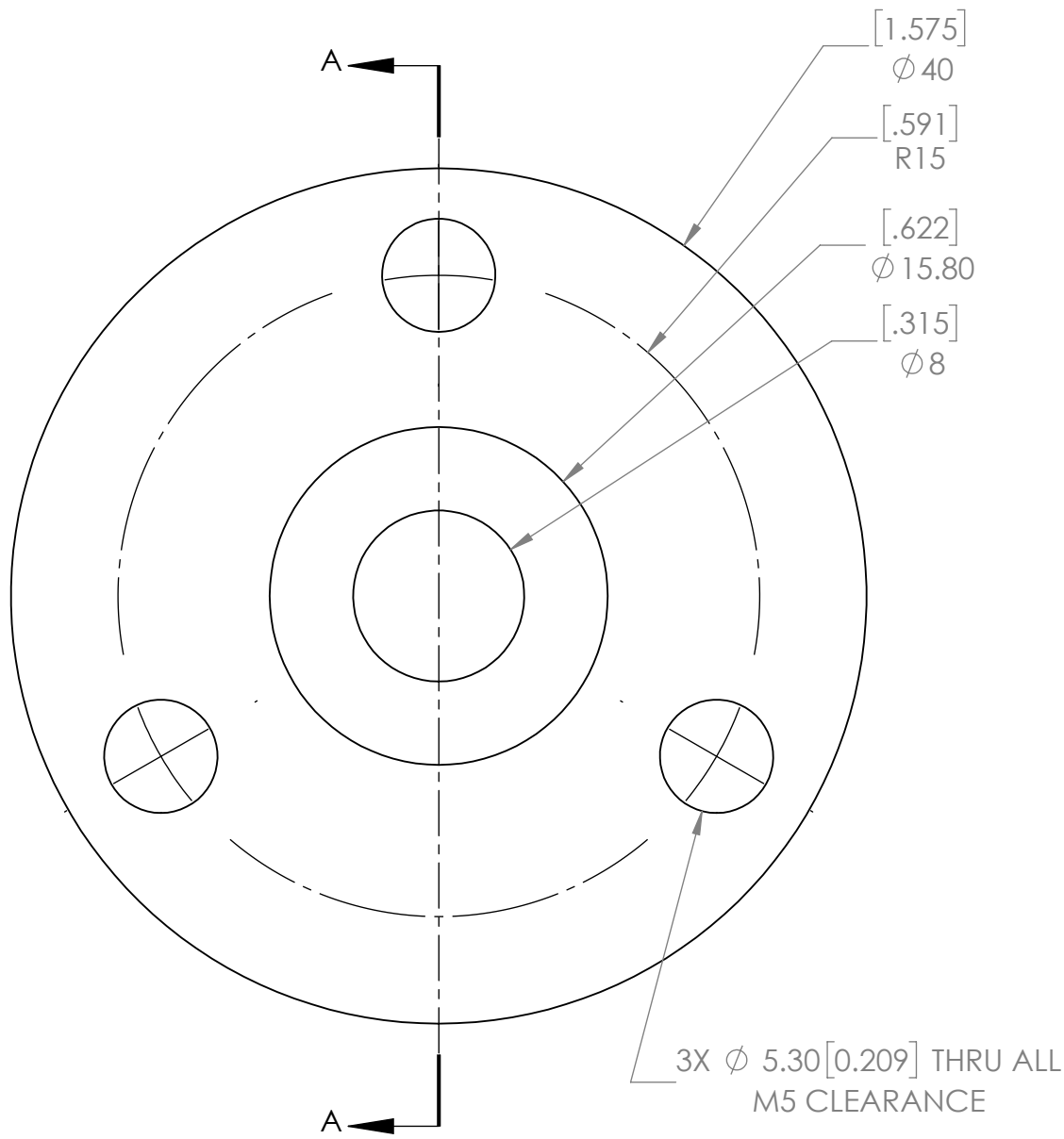


THIS DRAWING IS THE PROPERTY OF
Consortium for Advanced Radiation Sources

The University of Chicago
Center for Advanced Radiation Sources
5640 South Ellis Ave., Chicago, Illinois 60637

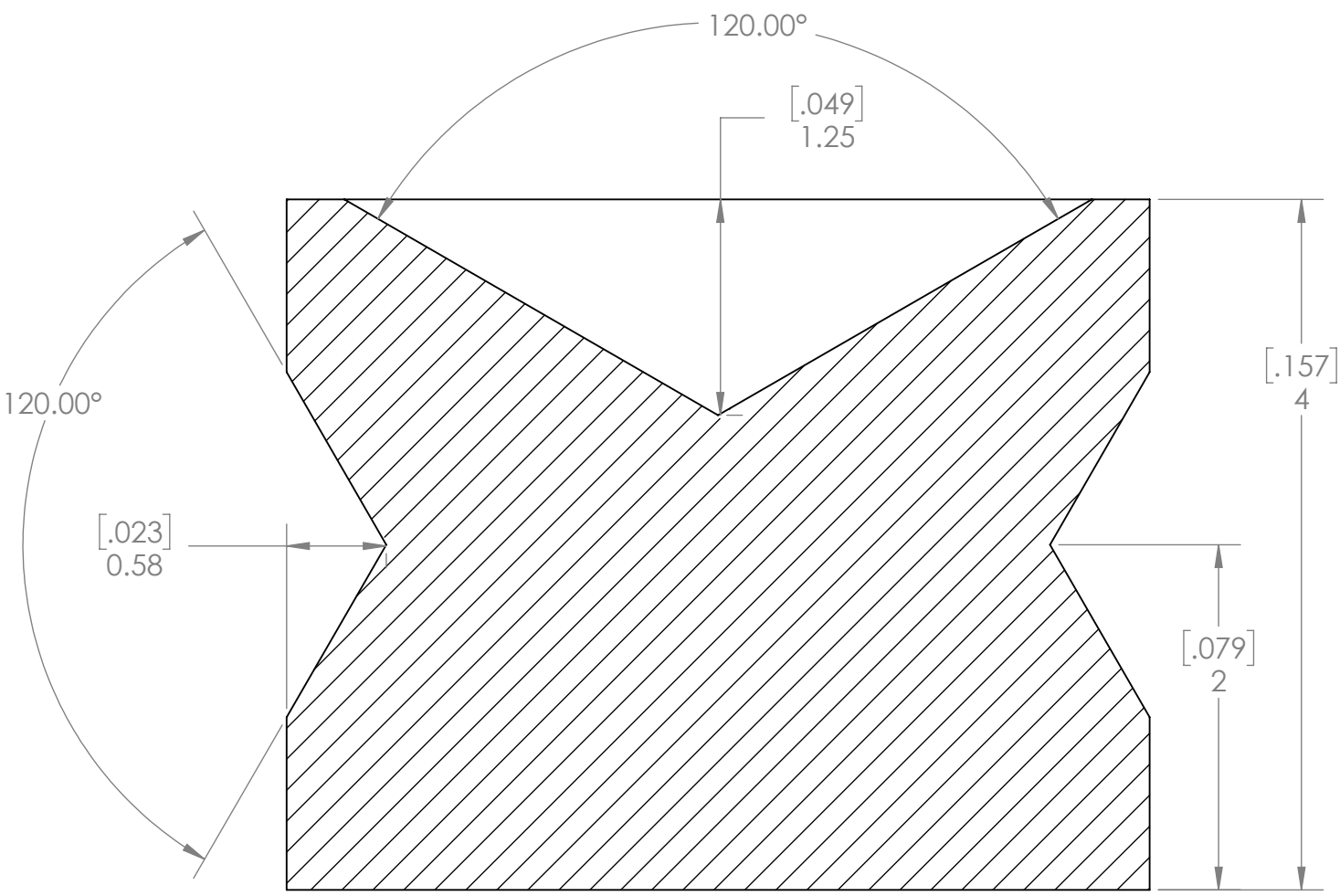
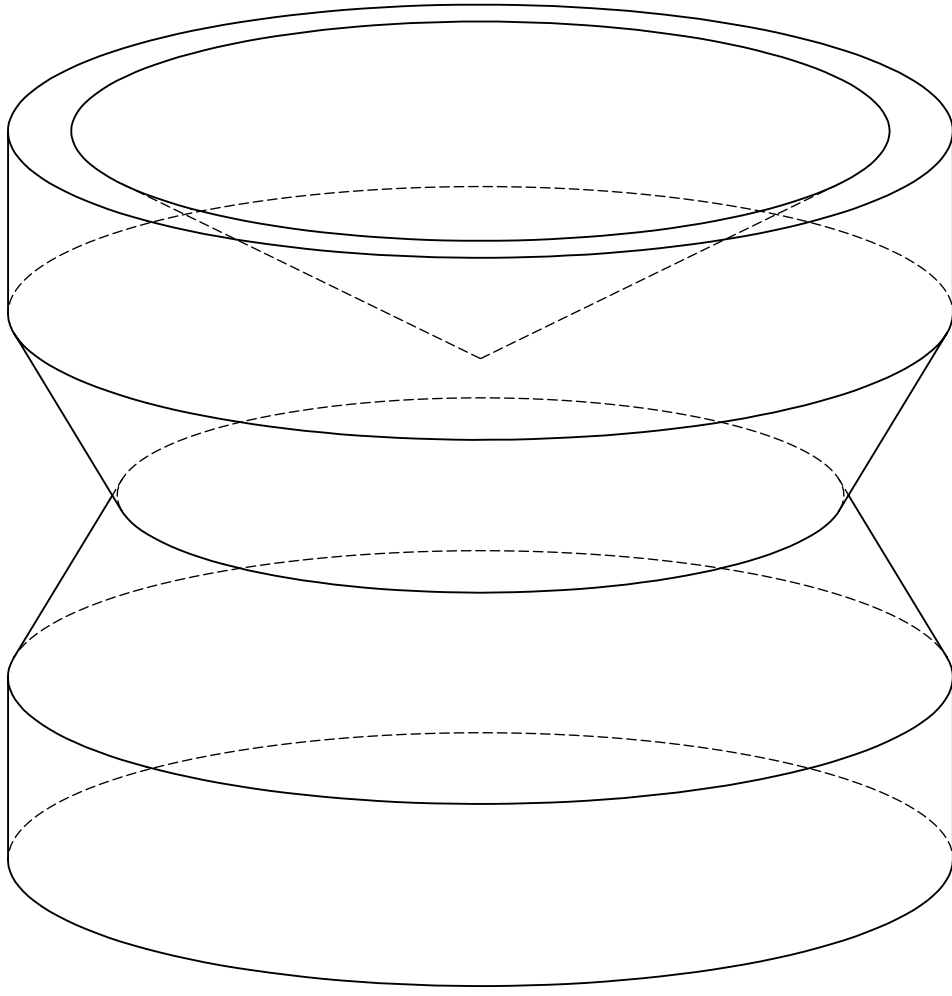
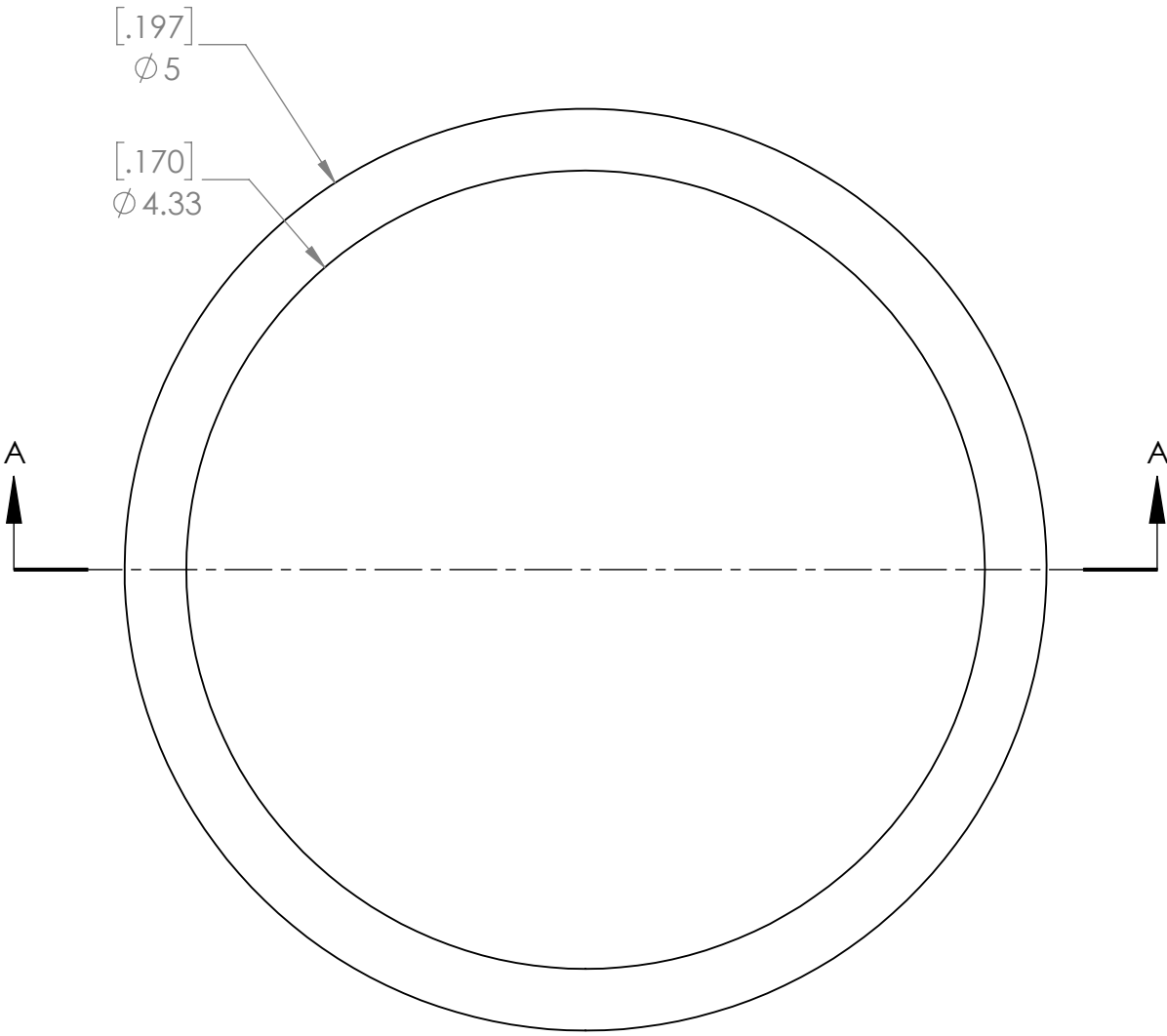
MJOLNIR v2.2

SIZE C	FSCM NO.	DWG No.	REV
SCALE: 1:5	FINISH WT: kg	SHEET: 1 of 1	



Property of the Consortium for Advanced Radiation Sources (CARS)
This document is to be maintained in confidence by the receiving party. It is not to be published nor its contents otherwise disseminated without the express written consent of CARS, its managing agent The University of Chicago, or ARCH Development Corp. acting as CARS agent.

UNLESS OTHERWISE SPECIFIED		DRAWN BY: MJP DATE 2/17/2023		THIS DRAWING IS THE PROPERTY OF CARS Consortium for Advanced Radiation Sources	
GENERAL LINEAR		CHECKED BY:		The University of Chicago Center For Advanced Radiation Sources 5640 South Ellis Ave., Chicago, Illinois 60637	
ANGULAR		DESIGNED BY:		Enlarged Sample Chamber MJOLNIR v2.0	
.X ± .03		PROJECT LEADER:		PRESSURE VESSEL V1.0	
.XX ± .015		MATERIAL: PEEK QTY 1		SCALE: 2:1	
.XXX ± .005		W.B.S. No.		FINISH WT: kg	
SURFACE FINISH		ELECTRONIC FILE NAME: Pressure Vessel_v2		SHEET: 1 of 1	



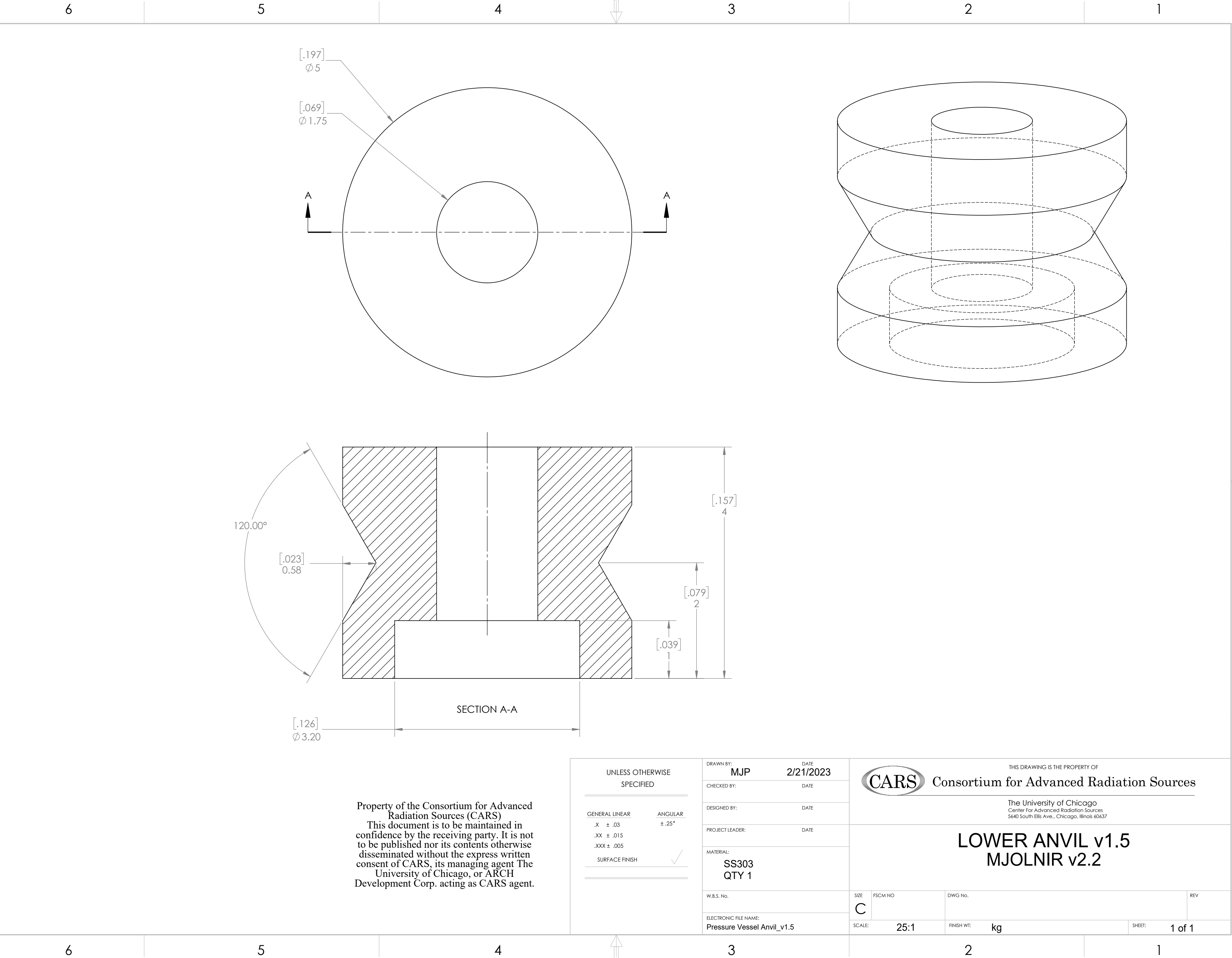
SECTION A-A

Property of the Consortium for Advanced Radiation Sources (CARS)
This document is to be maintained in confidence by the receiving party. It is not to be published nor its contents otherwise disseminated without the express written consent of CARS, its managing agent The University of Chicago, or ARCH Development Corp. acting as CARS agent.

UNLESS OTHERWISE SPECIFIED	
GENERAL LINEAR	ANGULAR
.X ± .03	± .25°
.XX ± .015	
.XXX ± .005	
SURFACE FINISH	✓

DRAWN BY: MJP	DATE 2/21/2023
CHECKED BY:	DATE
DESIGNED BY:	DATE
PROJECT LEADER:	DATE
MATERIAL: SS 303 QTY 1 EACH	
W.B.S. No.	
ELECTRONIC FILE NAME: Pressure Vessel Anvil_v1.5_upper anvil	

THIS DRAWING IS THE PROPERTY OF CARS Consortium for Advanced Radiation Sources			
The University of Chicago Center For Advanced Radiation Sources 5640 South Ellis Ave., Chicago, Illinois 60637			
UPPER (BALL) ANVIL v1.5 MJOLNIR v2.2			
SIZE C	FSCM NO.	DWG No.	REV
SCALE: 25:1	FINISH WT: kg	SHEET: 1 of 1	



Property of the Consortium for Advanced Radiation Sources (CARS)
This document is to be maintained in confidence by the receiving party. It is not to be published nor its contents otherwise disseminated without the express written consent of CARS, its managing agent The University of Chicago, or ARCH Development Corp. acting as CARS agent.

UNLESS OTHERWISE SPECIFIED	
GENERAL LINEAR	ANGULAR
.X ± .03	± .25°
.XX ± .015	
.XXX ± .005	
SURFACE FINISH	✓

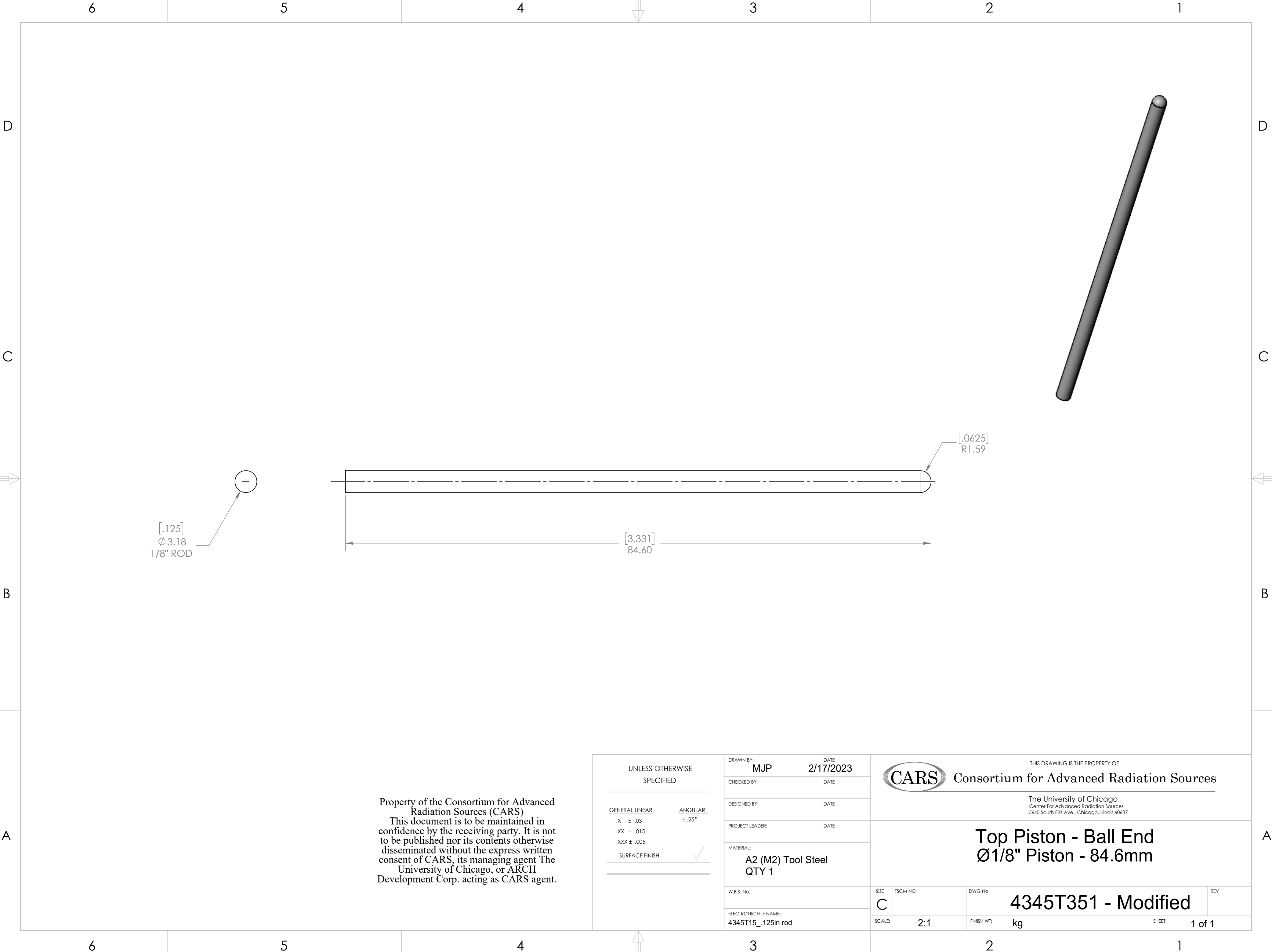
DRAWN BY:	MJP	DATE	2/21/2023
CHECKED BY:		DATE	
DESIGNED BY:		DATE	
PROJECT LEADER:		DATE	
MATERIAL:	SS303 QTY 1		
W.B.S. No.			
ELECTRONIC FILE NAME:	Pressure Vessel Anvil_v1.5		

THIS DRAWING IS THE PROPERTY OF
CARS Consortium for Advanced Radiation Sources

The University of Chicago
Center For Advanced Radiation Sources
5640 South Ellis Ave., Chicago, Illinois 60637

LOWER ANVIL v1.5
MJOLNIR v2.2

SIZE	FSCM NO.	DWG No.	REV
C			
SCALE:	25:1	FINISH WT:	kg
		SHEET:	1 of 1



Property of the Consortium for Advanced Radiation Sources (CARS)
This document is to be maintained in confidence by the receiving party. It is not to be published nor its contents otherwise disseminated without the express written consent of CARS, its managing agent The University of Chicago, or ARCH Development Corp. acting as CARS agent.

UNLESS OTHERWISE SPECIFIED		DRAWN BY: MJP		DATE: 2/17/2023		THIS DRAWING IS THE PROPERTY OF	
CHECKED BY:		DATE:		DESIGNED BY:		DATE:	
PROJECT LEADER:		DATE:		MATERIAL:		A2 (M2) Tool Steel	
QTY 1		W.B.S. No.		SIZE: C		FSCM NO.	
ELECTRONIC FILE NAME:		4345T15_ .125in rod		SCALE: 2:1		FINISH WT: kg	
SHEET: 1 of 1		REV		DWG No.		4345T351 - Modified	

